



SAMUEL & SONS

New for spring 2016: Lori Weitzner presents The Bejewelled Collection



Designed by Lori Weitzner, Bejewelled is a collection of decorative trims featuring a luxurious selection of tapes, cords and holdbacks inspired by jewellery both old and new. The collection truly takes trim to the next level, featuring a mix of textures and techniques in silver, gold and other opulent tones. Many of the designs are handmade to ensure high quality craftsmanship and the attention to detail which is found in fine jewellery.

Bejewelled includes seven designs in total, with five intricate tapes, one holdback and one cord. Charmer is offered in four colour-ways and is a true show stopper. Fluid rows of metal beading are sewn on the silk satin with luxurious metallic thread. Orion is the hand embroidered, studded tape, a modern interpretation of a time honoured technique, available in two sizes and three distinct colours. This style is also available in the stylish Orion.

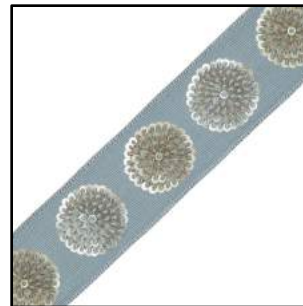
Juliette draws up the classic beauty of of the pearl necklace, embellished by hand with pearls and metallic thread. Whitney is a mixture of matte and metallic threads, wrapped together to form a cord offered in ten delightful tones. Astra finishes off the collection with a glamorous tape featuring hand sewn matte sequins using age-old French knot technique. The embroidery forms multi-coloured motifs that elegantly repeat across its surface, available in eleven usable colour-ways.

www.samuelandsons.com

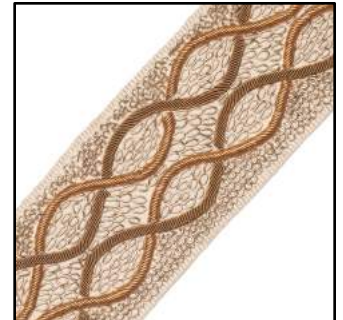
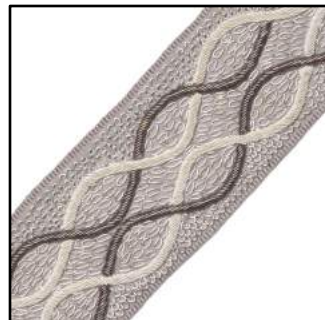
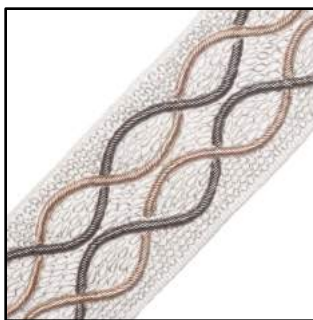
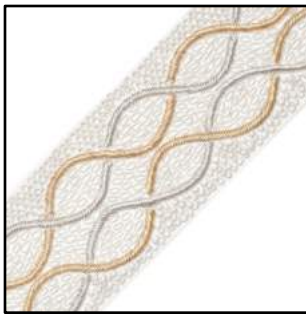
For further information on Samuel & Sons, please contact Florence or Hannah by emailing SamuelAndSons@wildcard.co.uk or calling 020 7257 6470



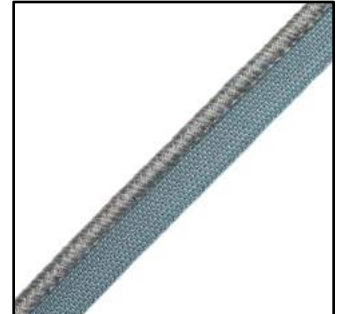
Artemis Glass Beaded Border in Jet, Nickel
& Honey / Juliette Pearl Border



Astra Embroidered Border in Charcoal,
Rhubarb, Aegean & Cinnamon



Charmer Embroidered Border in Lily, Frost,
Twilight & Amber



Whitney Cord with Tape in Moonstone,
Tortoise Shell, Tiger'Eye & Pond

