

## NEW FOR AUTUMN 2016: LA TERRE COLLECTION



Samuel & Sons present **La Terre**, a collection of organically inspired passementerie woven from the finest denier linens and luxurious cottons. The collection offers an understated purity and elegance, consisting of sophisticated cords, gimps, borders and fringes. The subtle colour-ways of **La Terre** include *Canvas, Dune, Flax and Sea Mist*, all of which are earthen in origin.

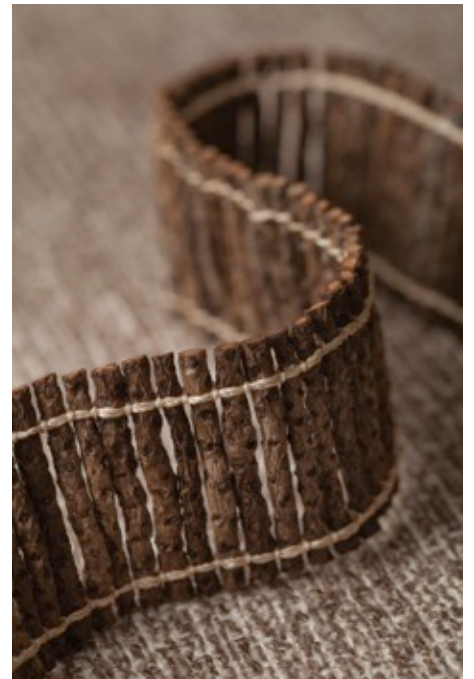
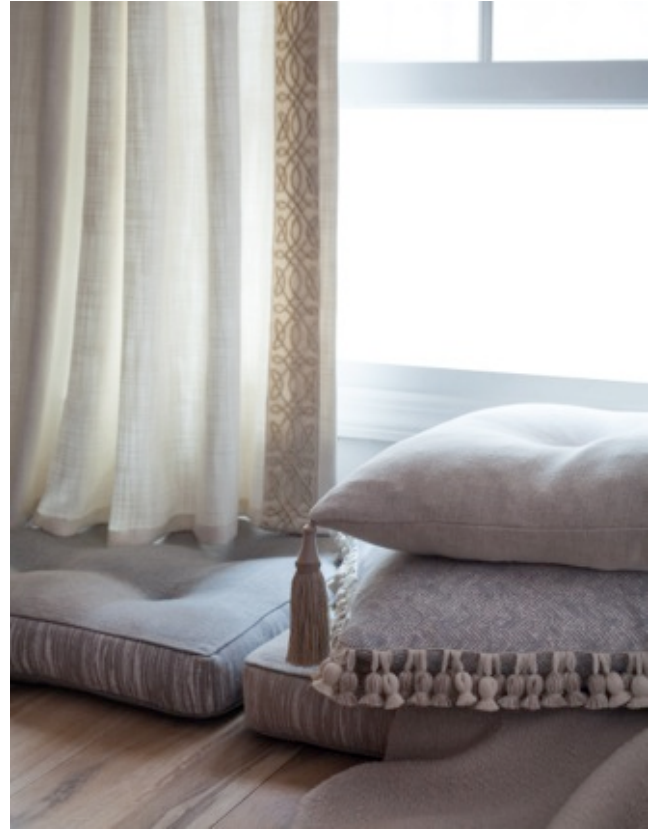
Twisted fine **Linen Cords** are available in 3mm, 5mm and 8mm diameters and complemented by a soft 1" **Linen Brush Fringe** and waxed cotton cord **Macramé Gimp**.

Linen and jute are used to create the elegant heirloom quality in the graceful geometric **Applique Border** influenced by ornate iron gate designs.

The **La Terre Branch** and **Printed Borders** draw from the Japanese aesthetic of Wabi Sabi which finds influence in natural objects and the progression of time. A row of 2" coconut wood branches bound and hand tied with twine create the **La Terre Branch Border**, appropriate for both upholstery and drapery applications. The **La Terre Printed Border** is a hand screen print organic stripe on linen mirroring the patterns of birch bark.

There are astounding 75 tassels per meter in the hand tied **La Terre Onion Tassel Fringe**, a luxurious strié linen fringe which waterfalls beautifully with a coordinated rib border.

Finally, the **La Terre Cut Fringe**, single tassel tieback and key tassel are loomed in novel yarns of varied deniers and fluidity. Coined the paper yarn, the cut fringe offers exquisite drapability and texture.



For further information on Samuel & Sons, please contact Florence or Sophie by emailing [SamuelAndSons@wildcard.co.uk](mailto:SamuelAndSons@wildcard.co.uk) or calling 020.7257.6470