

New for spring 2015: The Labyrinth Collection



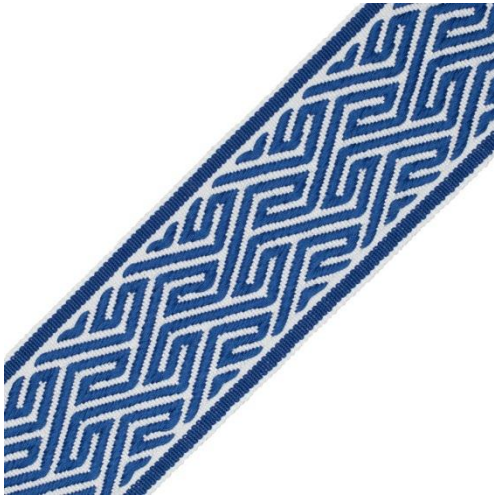
Samuel & Sons, purveyors of exquisite trim, present the Labyrinth collection, inspired by the architectural mazes of Ancient Greece.

In Greek mythology, the labyrinth was an elaborate maze structure built to hold the Minotaur and is a motif that has been represented in art and culture for thousands of years. The skilled designers at Samuel & Sons have reinterpreted this design with contemporary geometry, to create a border that transcends time.

Clean and graphic in its rendering, this tailored design is created through a series of raised satin stitches which sit above a refined ground. Our dual-tone approach to colour varies from the subtlety of neutrals in *Twine* to the high contrast of navy against ivory in *Midnight*. There are also several vivid, tone-on-tone interpretations such as *Ruby*, *Palm* and *Azure*.

www.samuelandsons.com

For further information on Samuel & Sons, please contact Lauren or Hannah by emailing SamuelAndSons@parkerhobart.com or calling 020 7584 1744 www.parkerhobart.com



06 Agean Blue



10 Onyx



12 Cilantro



14 Camellia



15 Ruby



18 Wedgewood